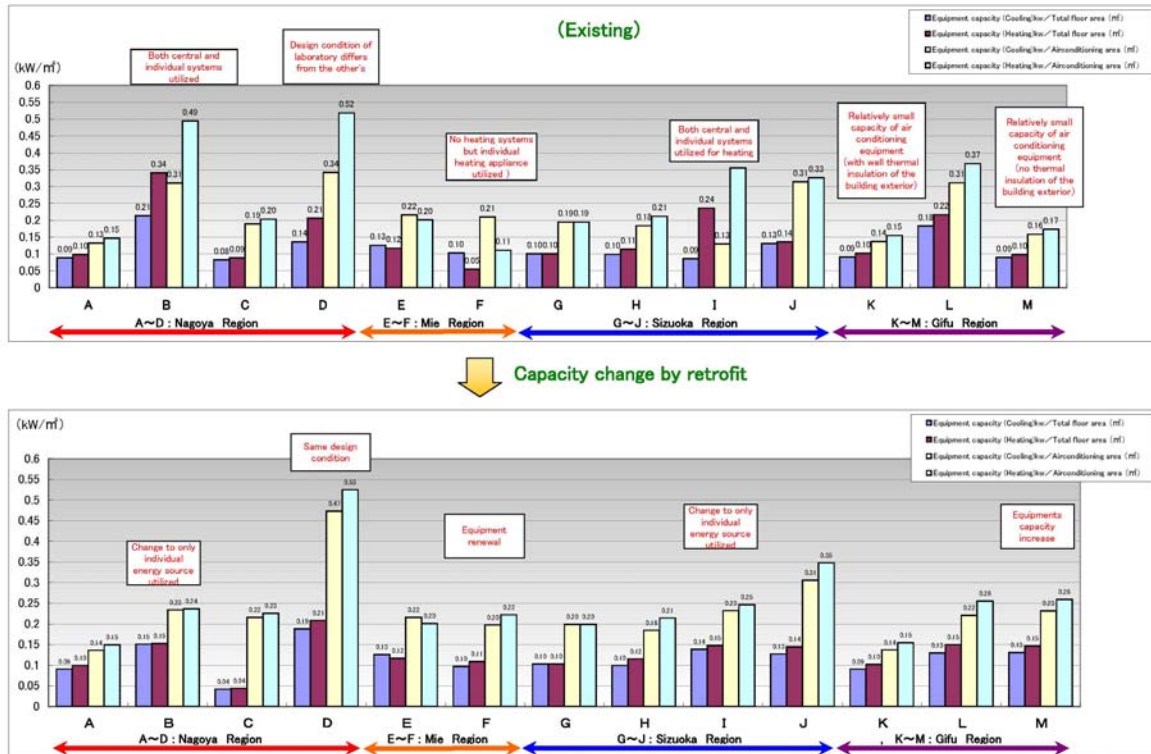
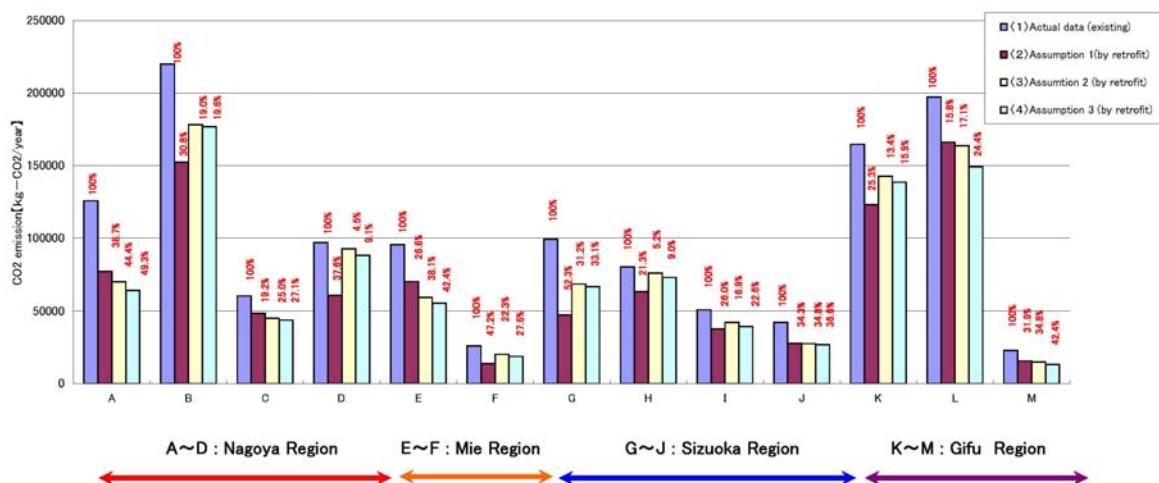


③ Air conditioning equipment capacity (existing) — Air conditioning equipment capacity change (by retrofit)



② Assumption of CO2 emission reduction by retrofit

[rate and amount kg-CO2/year]



(1) Actual data (existing) : Mean value of energy consumption recorded for the last three years (adapted to GBES)
 (2) Assumption 1 (by retrofit) : Amount of energy consumption assumed (adapted to GBES)
 (3) Assumption 2 (by retrofit) : Amount of energy consumption assumed (adapted to retrofit effect format [energy cost & CO2 emission] by Government)
 (4) Assumption 3 (by retrofit) : Amount of energy consumption assumed with architectural features (adapted to retrofit effect format [energy cost & CO2 emission] by Government)