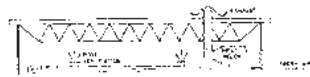


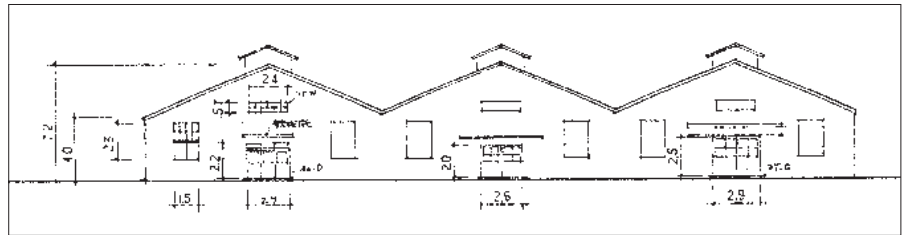
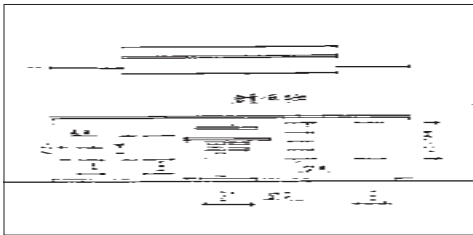
Fig. 1 Relationship between Temperature, Relative Humidity, and Vapor Pressure of Air and the Equilibrium Moisture Content of Wood

though refrigeration is not applied in this area, it is mentioned here because a tremendous amount of heat is being generated by the paper machine, and operating 2000° temperatures can easily exceed 4°C. To above summer ambient temperature. Since the paper machine requires air for the process itself, this makeup air is generally pulled from outside into the area under the operating floor by outside air units. These devices are simply fan and filter units with screen and hot-water coils for winter temperature. The air is then transferred into the machine area by being drawn through the operating floor as

The design of the hood for the drier section is beyond the scope of this chapter, except for its relation to the building



木下恵裕氏



YMP NEW ASSEMBLY PLANT (ヤマハアメリカ)

