

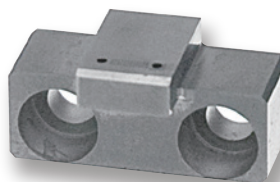
# Optical Interconnect Components

## Optical communication components

**Mating pins, guide pins, connector molds and other products using high precision grinding and EDM**

Optical communication components dispensable to high-speed communication. High-precision mold-related components and jigs and tools products will support stable communication environment.

### ■ Molded components for optical fiber Connectors



Hole diameter =  $\varnothing 0.125\text{mm}$   
Hole pitch =  $0.25\text{mm}$   
Hole tolerance =  $\pm 0.2\text{ }\mu\text{m}$   
Hole pitch tolerance =  $0.5\text{ }\mu\text{m}$



Cross-section



Holes