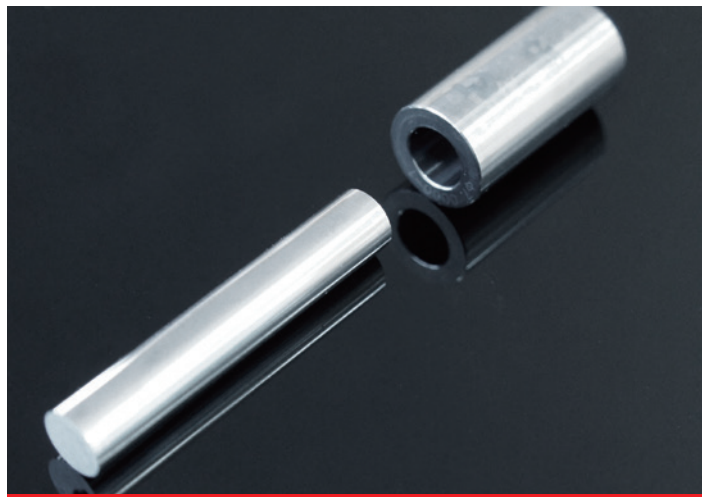
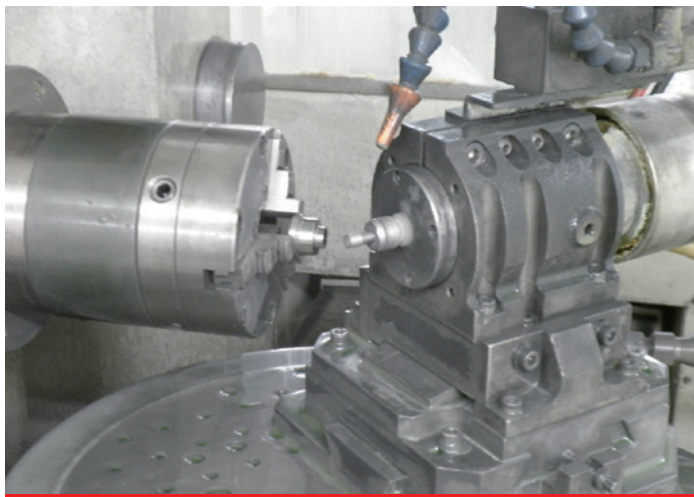


Components for lens molds



Aspherical grinding for nest of lens mold

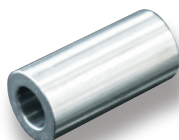


Core pins for lens molds



Carbide, binderless carbide, STAVAX, etc.
Carbide and binderless carbide
Spherical and aspheric machining
process PV value = $2\mu\text{m}$
Both angularity and concentricity are
below $1\mu\text{m}$

Sleeve for lens molds



Carbide, binderless carbide, STAVAX, etc.
Both angularity and concentricity are
below $1\mu\text{m}$
Please enquire about the shape.

Various precision mold bases

Carbide, binderless carbide, STAVAX, etc.
Machining accuracy: 1 to $5\mu\text{m}$

Various precision core pins

Machining accuracy: sub micron

